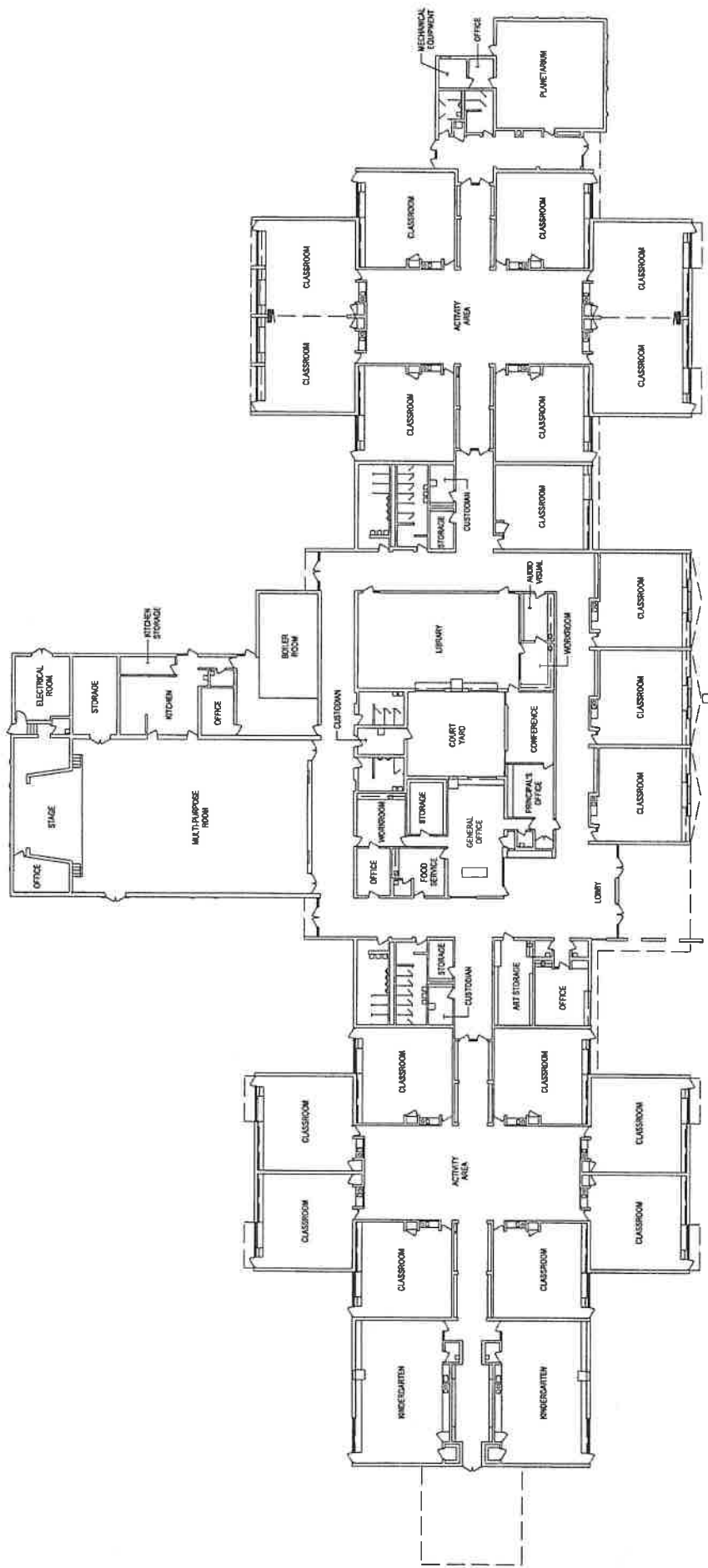


Appendix B: Building Ages, Classrooms and Monthly Afterschool Activities				Estimated # Monthly Activities	Sq. ft.
	Year	# classrooms			
BUILDING					
Adler Elementary, 19100 Filmore, 48075	1967	22		3	49,430
Birney K-8 School, 27225 Evergreen, 48076 (2 story)	1957	47		5	119,930
Bussey Center for Early Childhood + 2 Modular Buildings, 24501 Fredrick, 48033	1957	21		1	47,760
				evening meetings	
John W. English Administration Bldg. (JWE) 24661 Lahser, 48033	1964	offices			35,507
JWE Transportation Annex Modular Buildings 24661 Lahser, 48033	1990	offices		0	not available
Levey Middle School, 25300 W 9 Mile, 48033	1964	36		5	104,000
MacArthur K-8 Academy/University High School, 19301 W 12 Mile, 48076 (2 story)	1966	104		15	302,660
McIntyre Elementary, 19600 Saratoga, 48076	1968	23		3	35,000
Southfield Education Center (SEC)/Kennedy Learning Center, 16299 Mt. Vernon, 48075	1964	offices & 8		1	65,340
Southfield High School for the Arts & Technology, 24675 Lahser 48033 (2 story)	1950	139		20	290,682
& Instructional Technology Center 24855 Lahser 48033	1943	20		2	48,735
Southfield Regional Academic Campus (SRAC), 21705 Evergreen, 48075	1965	23		3	50,000
Stevenson Elementary, 27777 Lahser, 48034	1966	38		5	98,510
Thompson K-8 School, 16300 Lincoln, 48076 (2 Story)	1967	20		3	45,350
Vandenberg Elementary, 16100 Edwards, 48076					

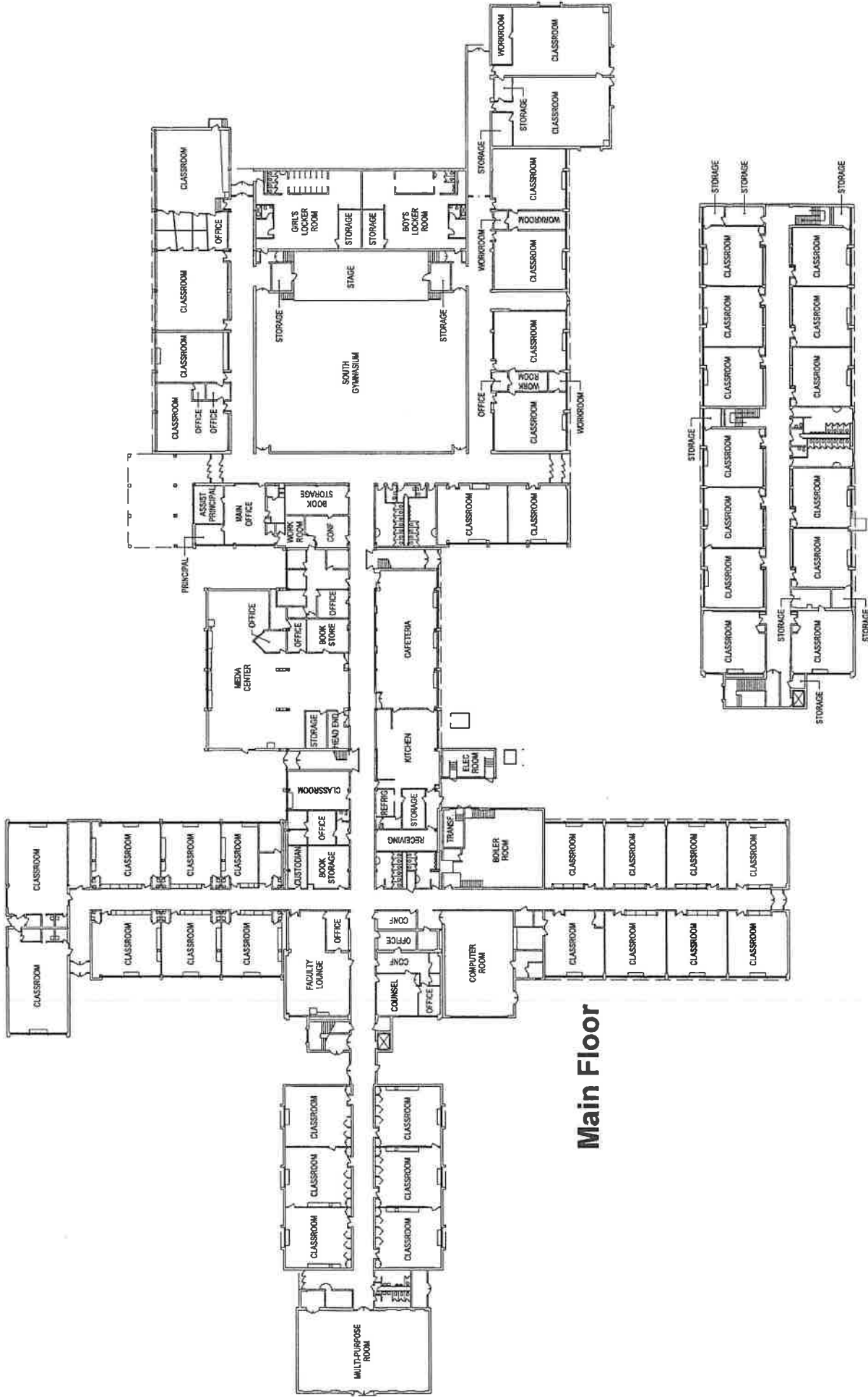


Adler Elementary School

49,430 sq. ft.

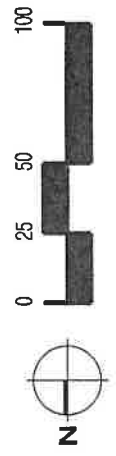
November 2, 2007





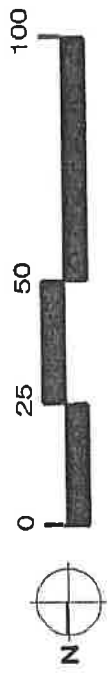
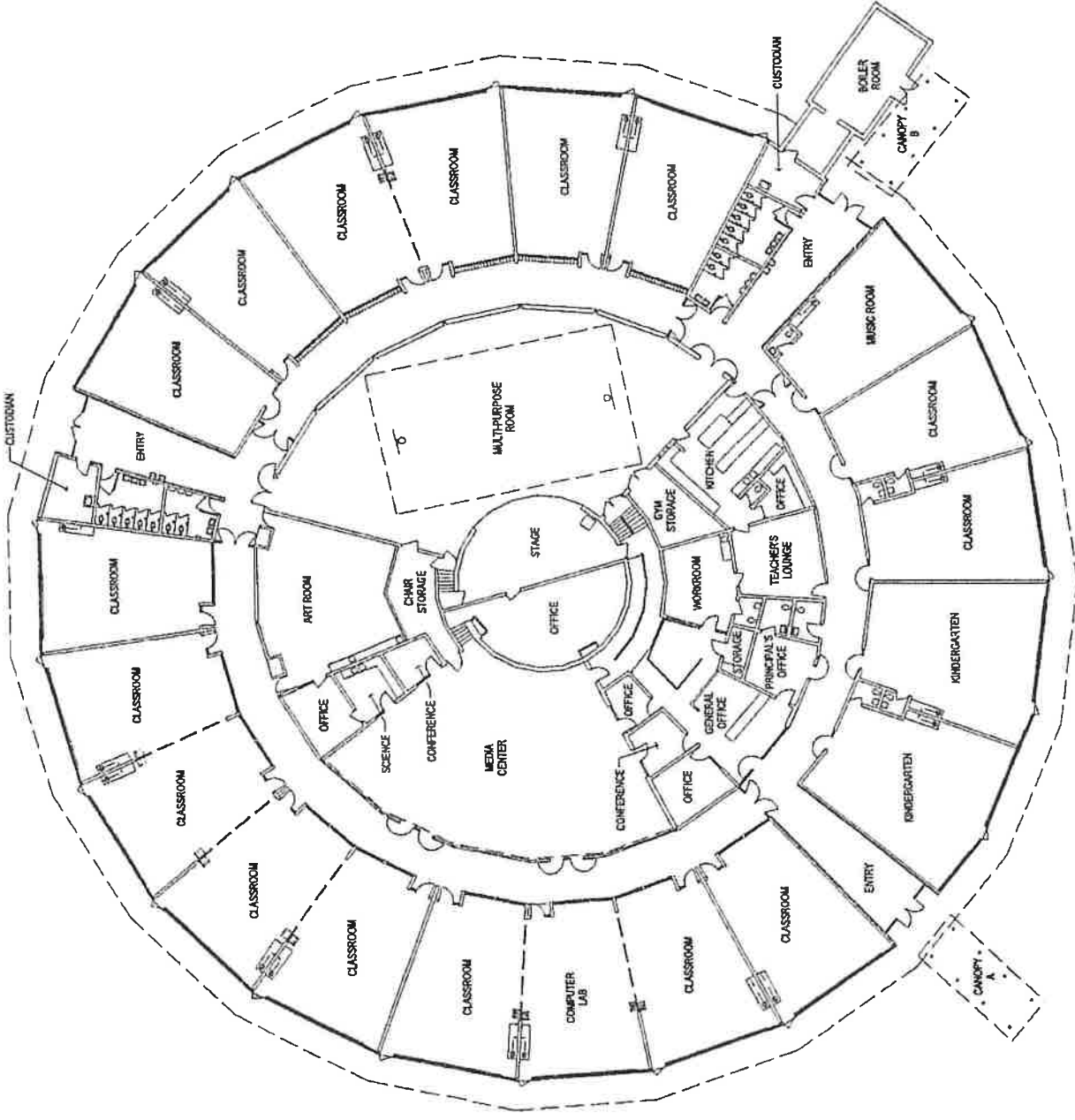
Main Floor

Second Floor



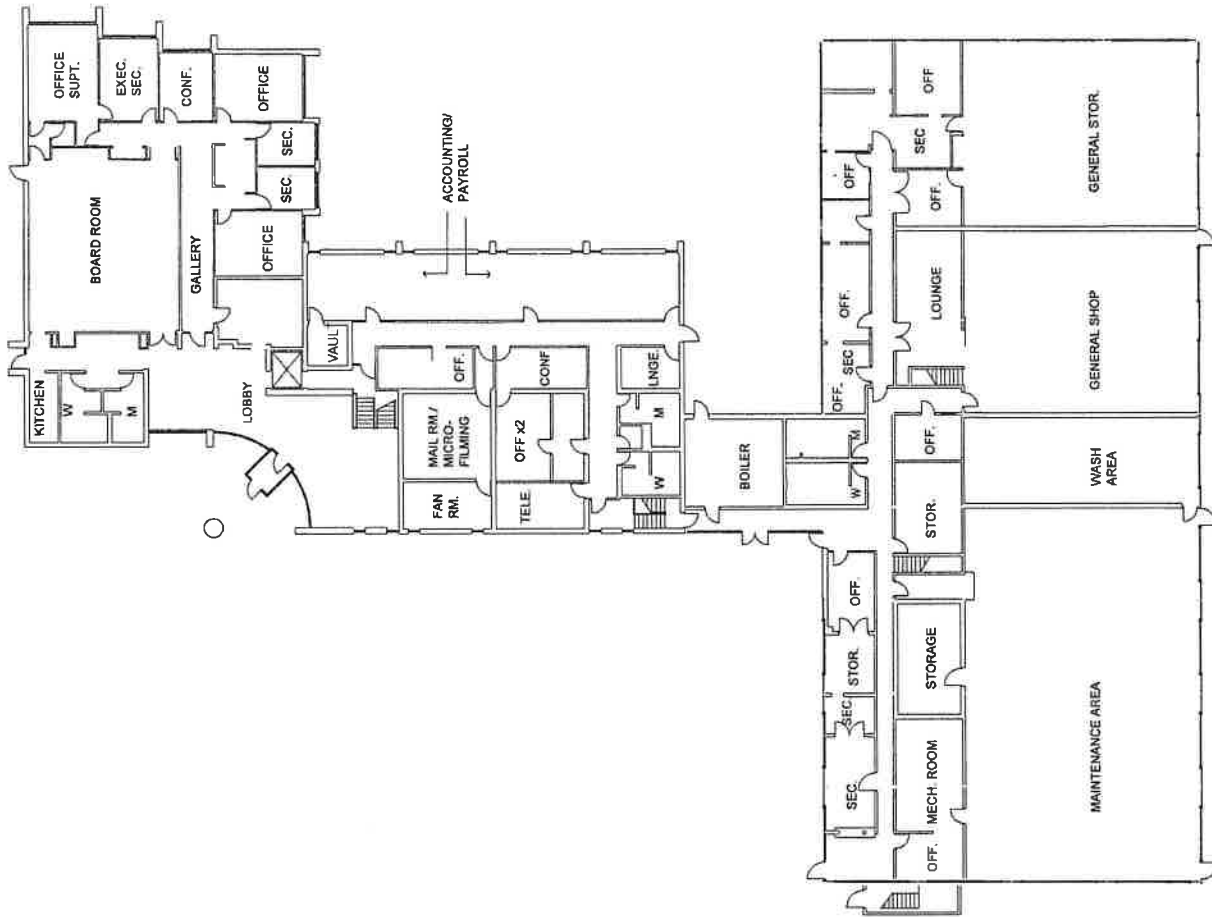
Birney K-8 School
 119,930 sq.ft.
 November 5, 2007



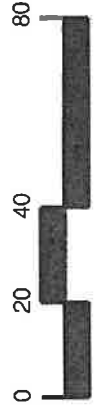
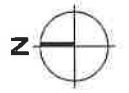


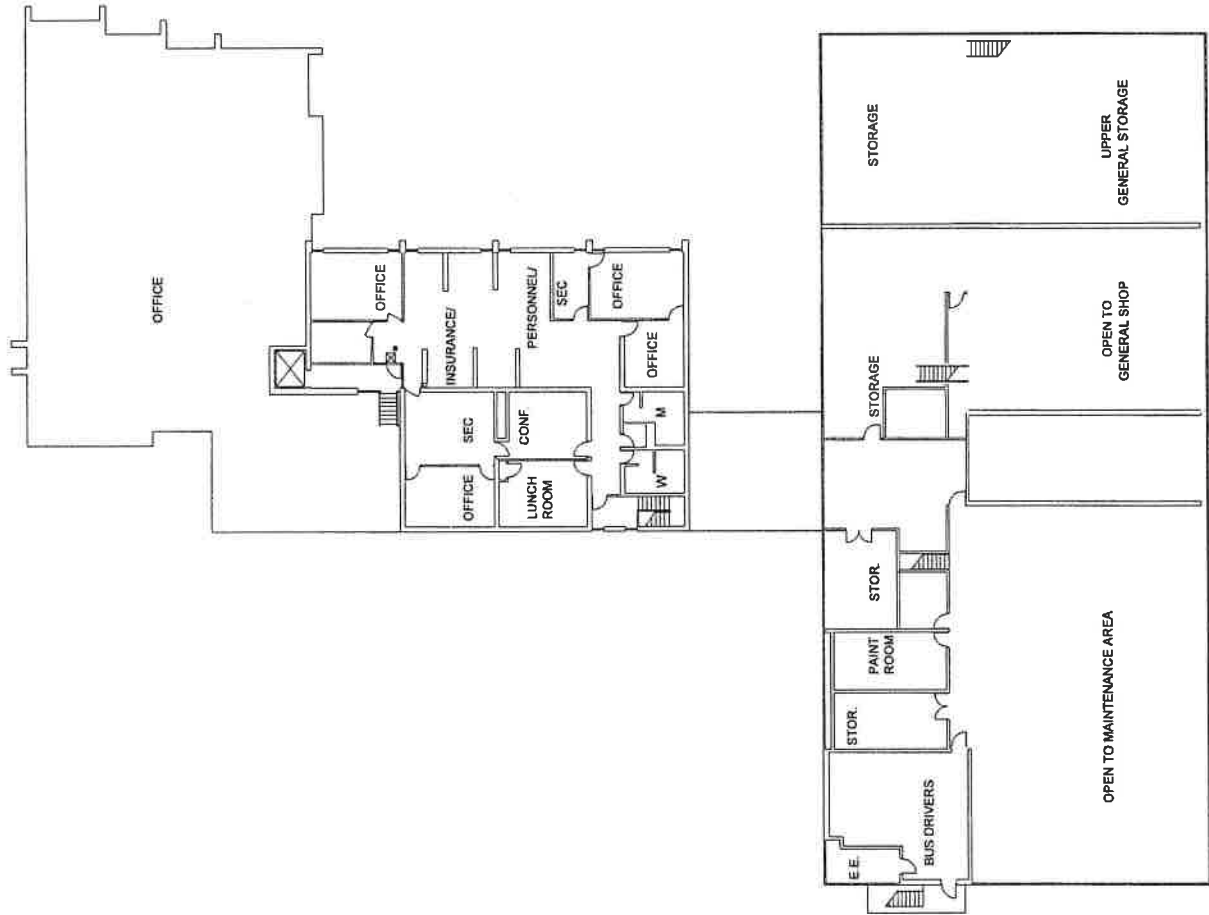
Bussey Preschool Program
Housed in the MacArthur Campus
47,760 sq.ft. and Portables
 November 2, 2007



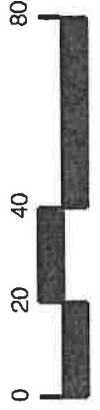
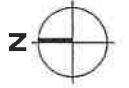


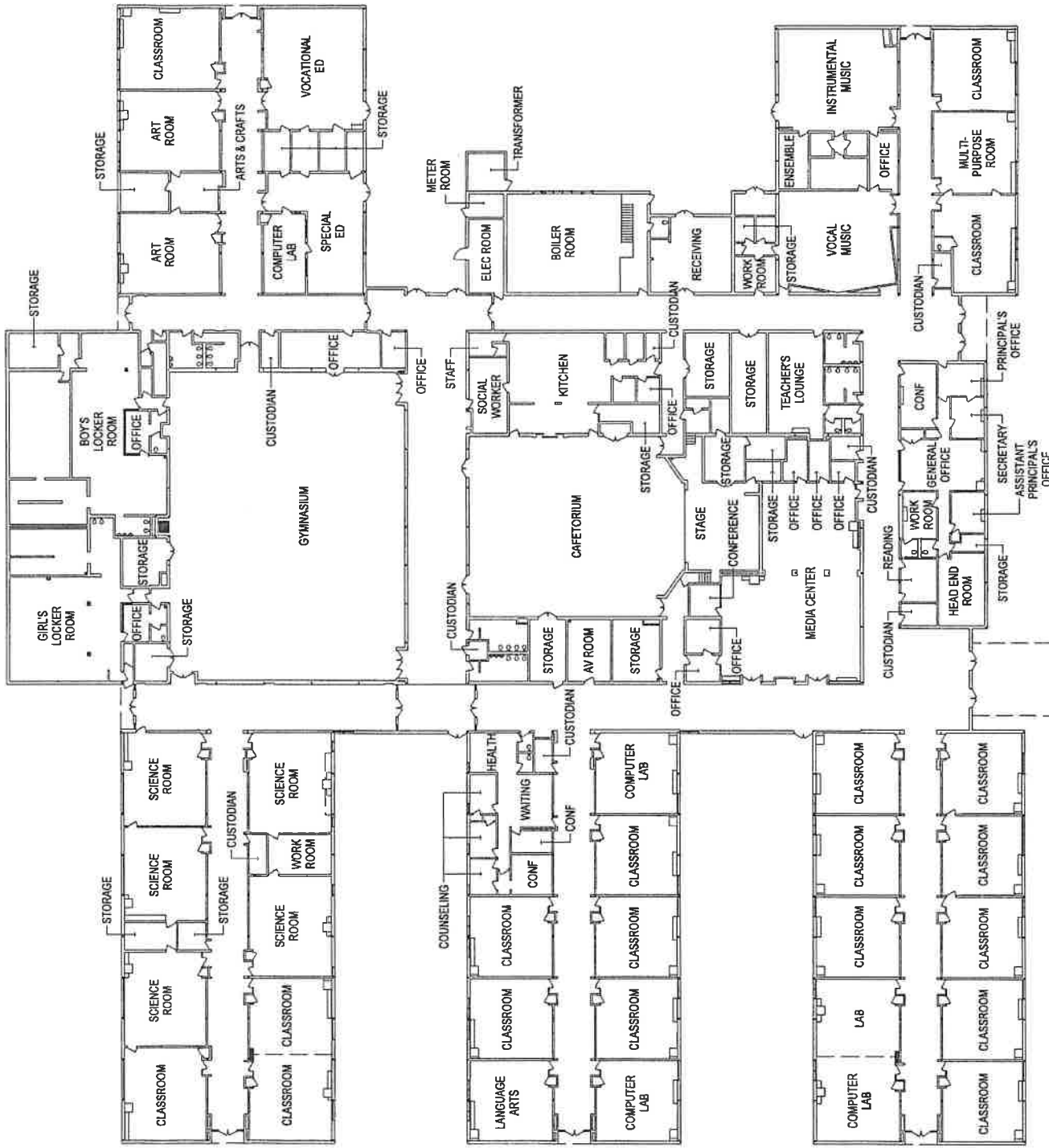
First Floor

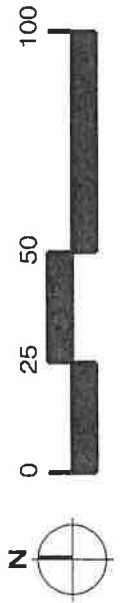
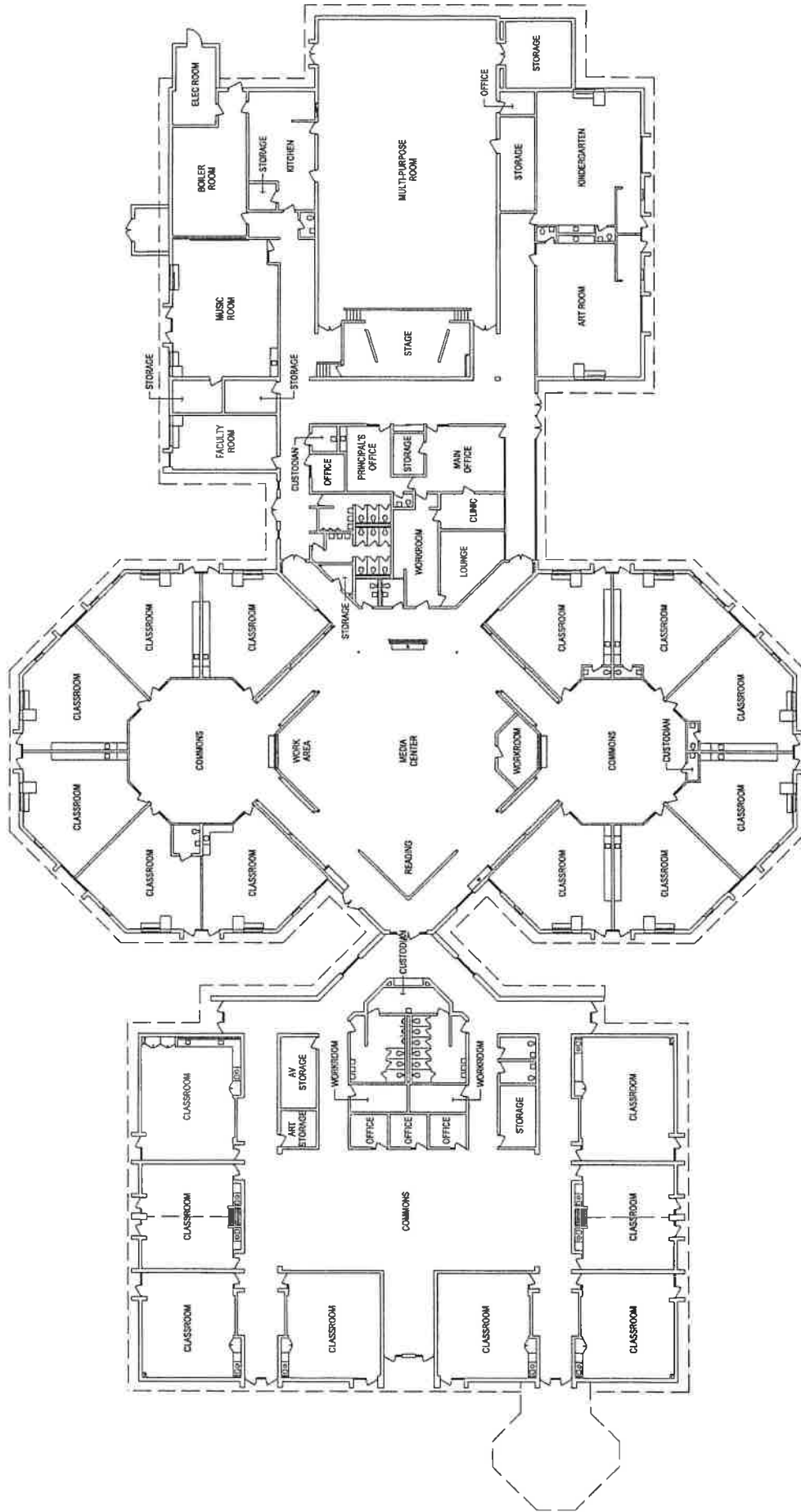




Second Floor





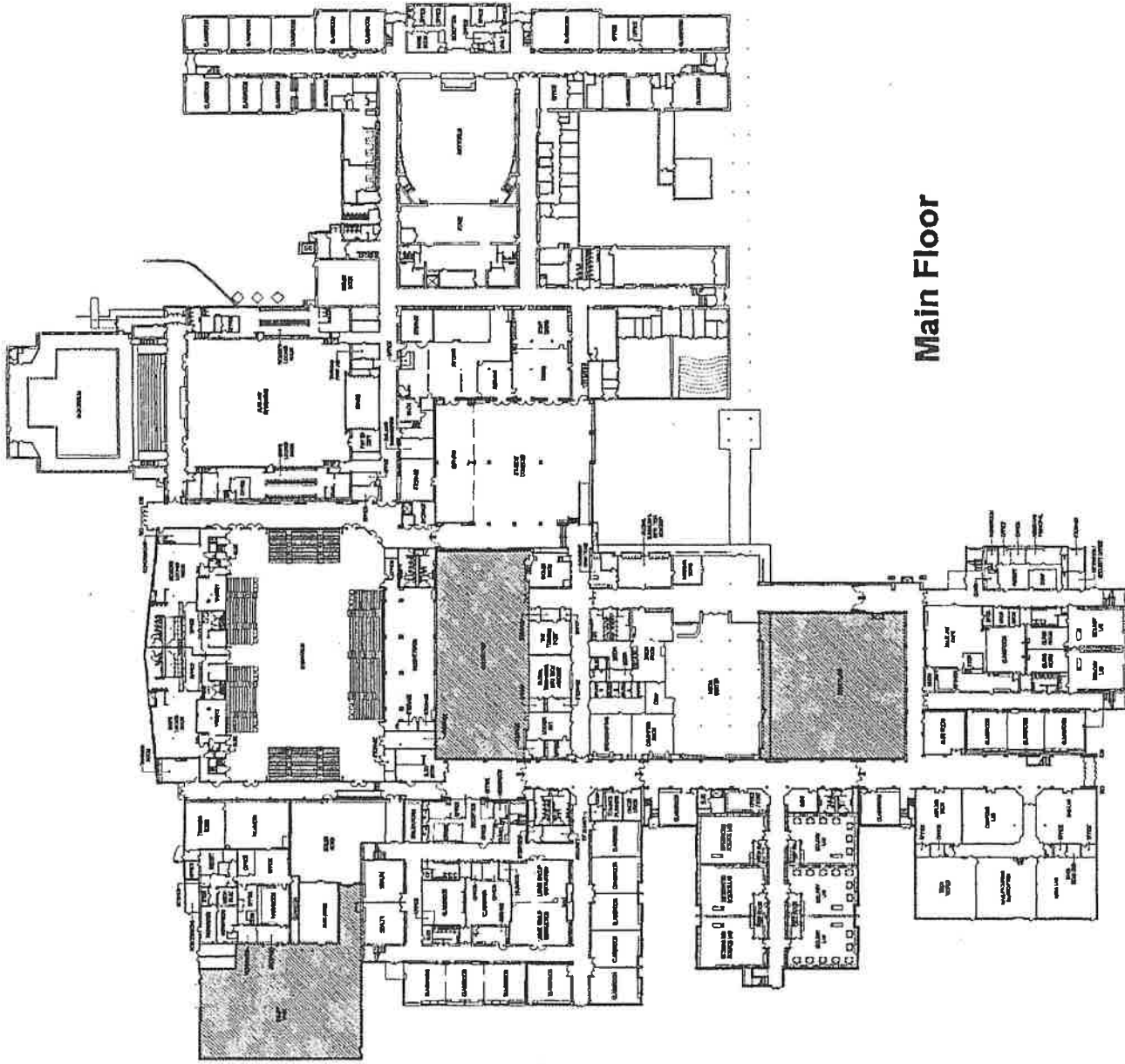


McIntyre Elementary School

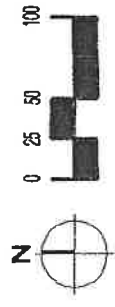
47,760 sq. ft.

November 2, 2007



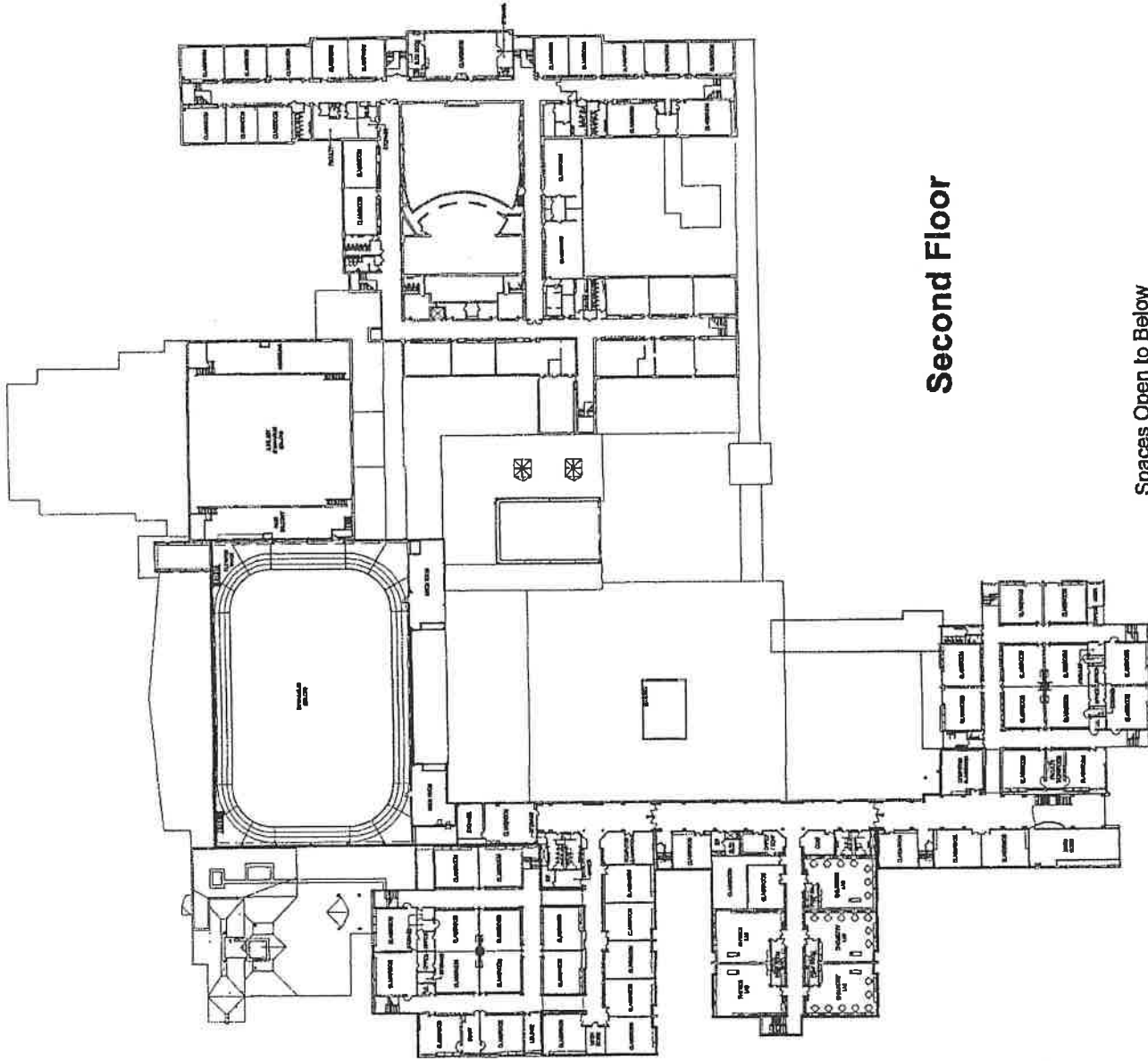


Main Floor



Southfield High School for the Arts and Technology
 290,682 gross sq.ft. (includes ITC 6,440 gsf)
 February 26, 2010





Second Floor

Spaces Open to Below

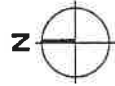
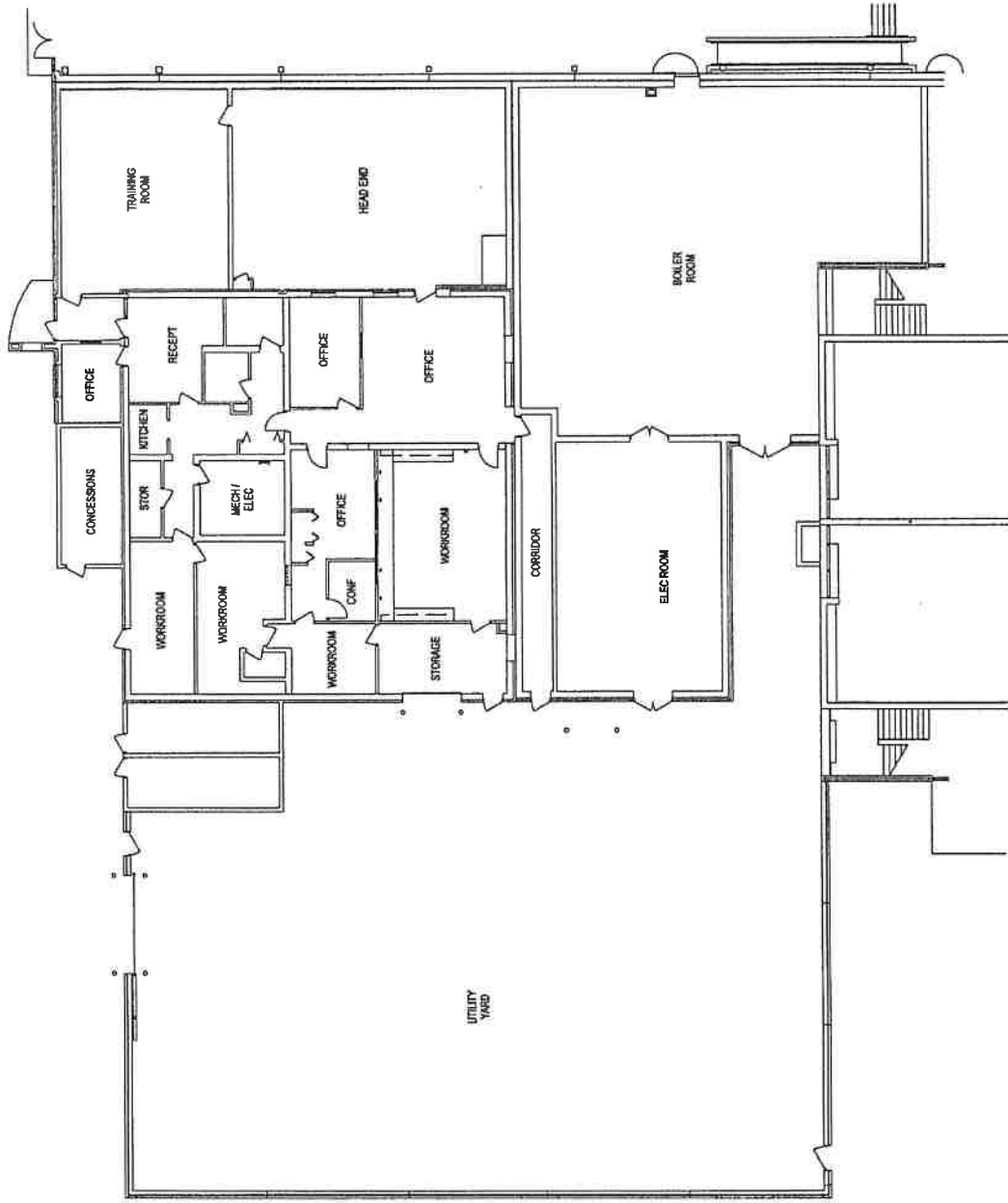
Gymnasium	10,770 sq.ft
Aux Gymnasium	10,212 sq.ft
Auditorium	7,350 sq.ft
Stairwell	1,091 sq.ft
Total	29,423 sq.ft x 50% = 14,712 sq.ft.

Southfield High School for the Arts and Technology

160,548 gross sq.ft. (does not include spaces open to below)

February 26, 2010

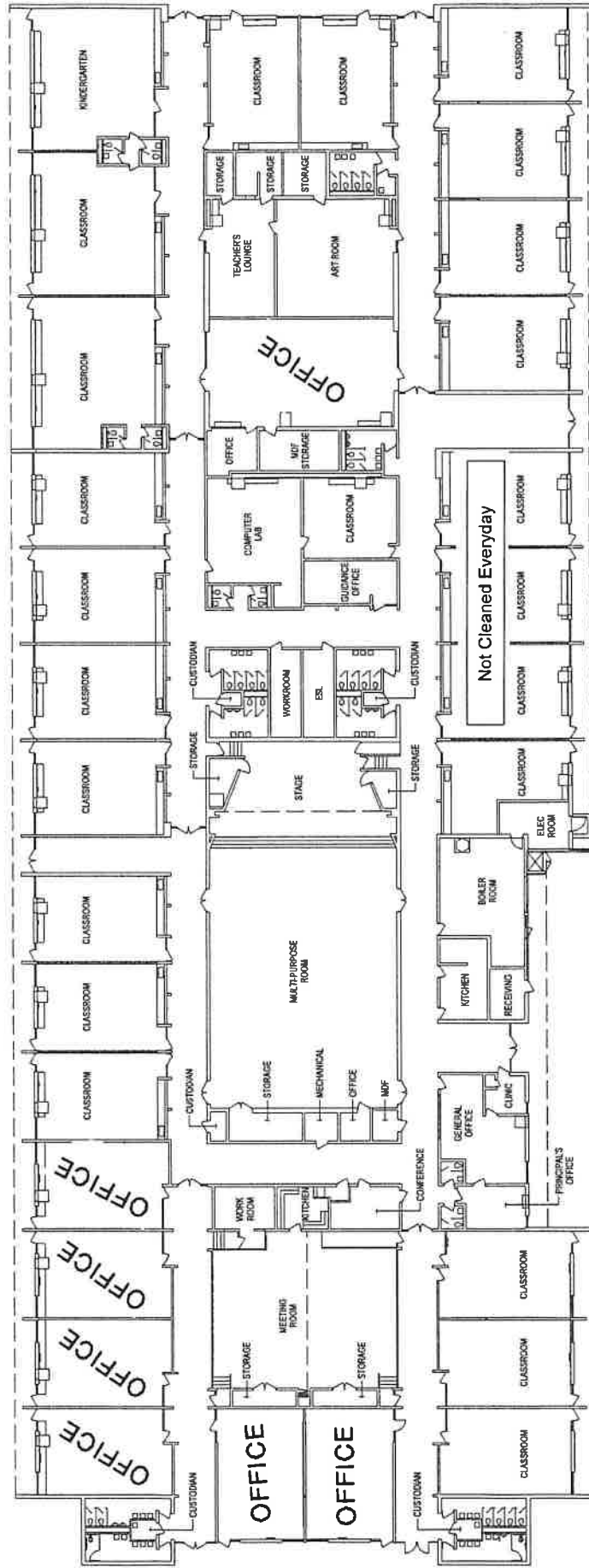




ITC Building (Included in Southfield High's Count of Custodians)

6,490 sq. ft.
November 8, 2007



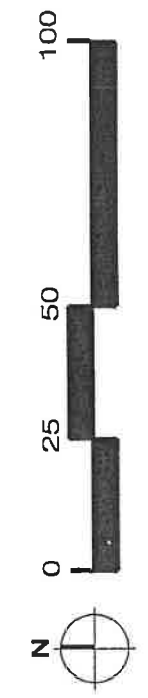
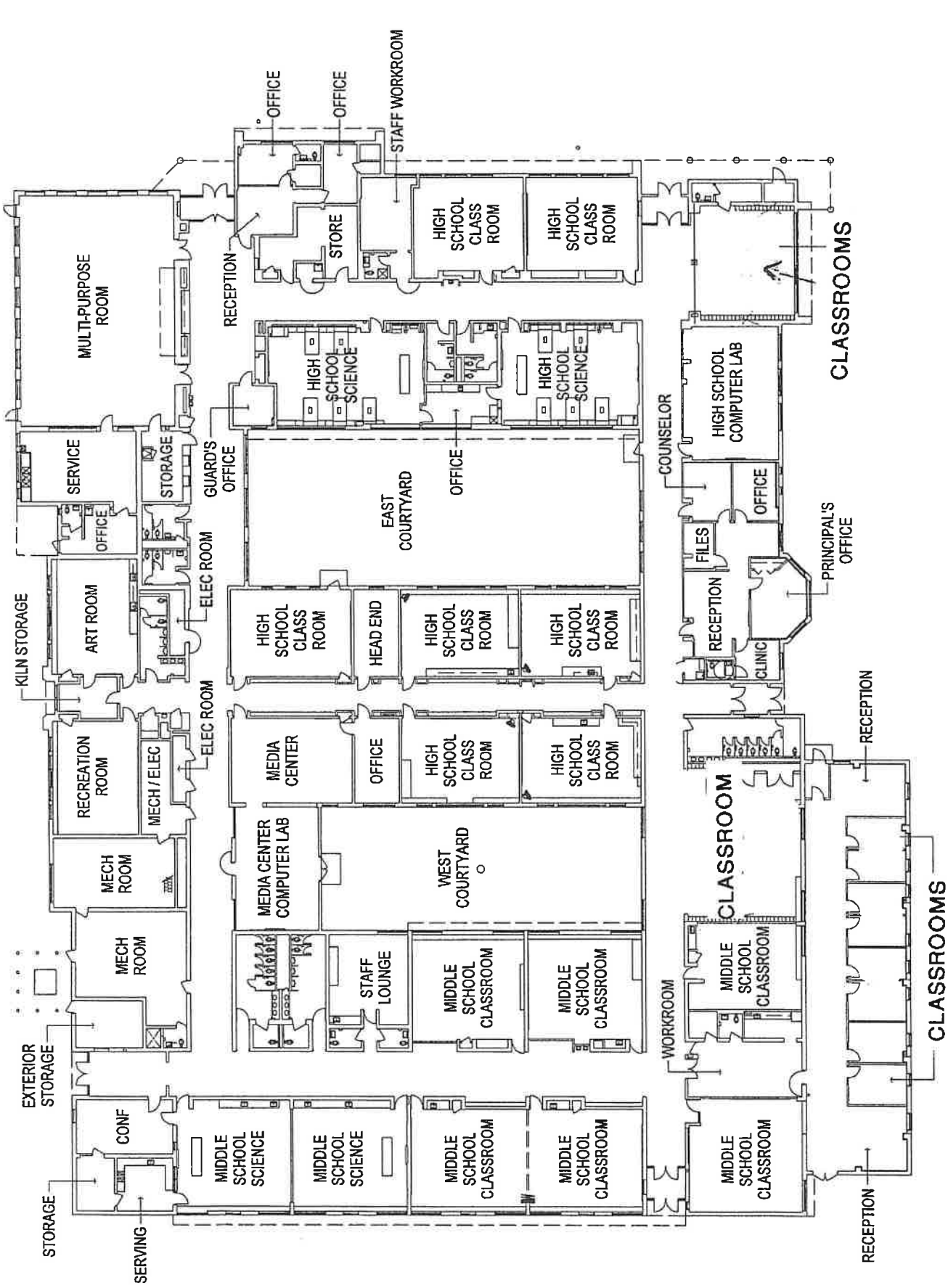


Southfield Education Center and Kennedy Learning Center

65,340 sq.ft.

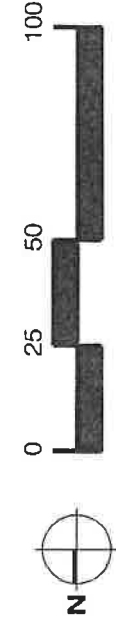
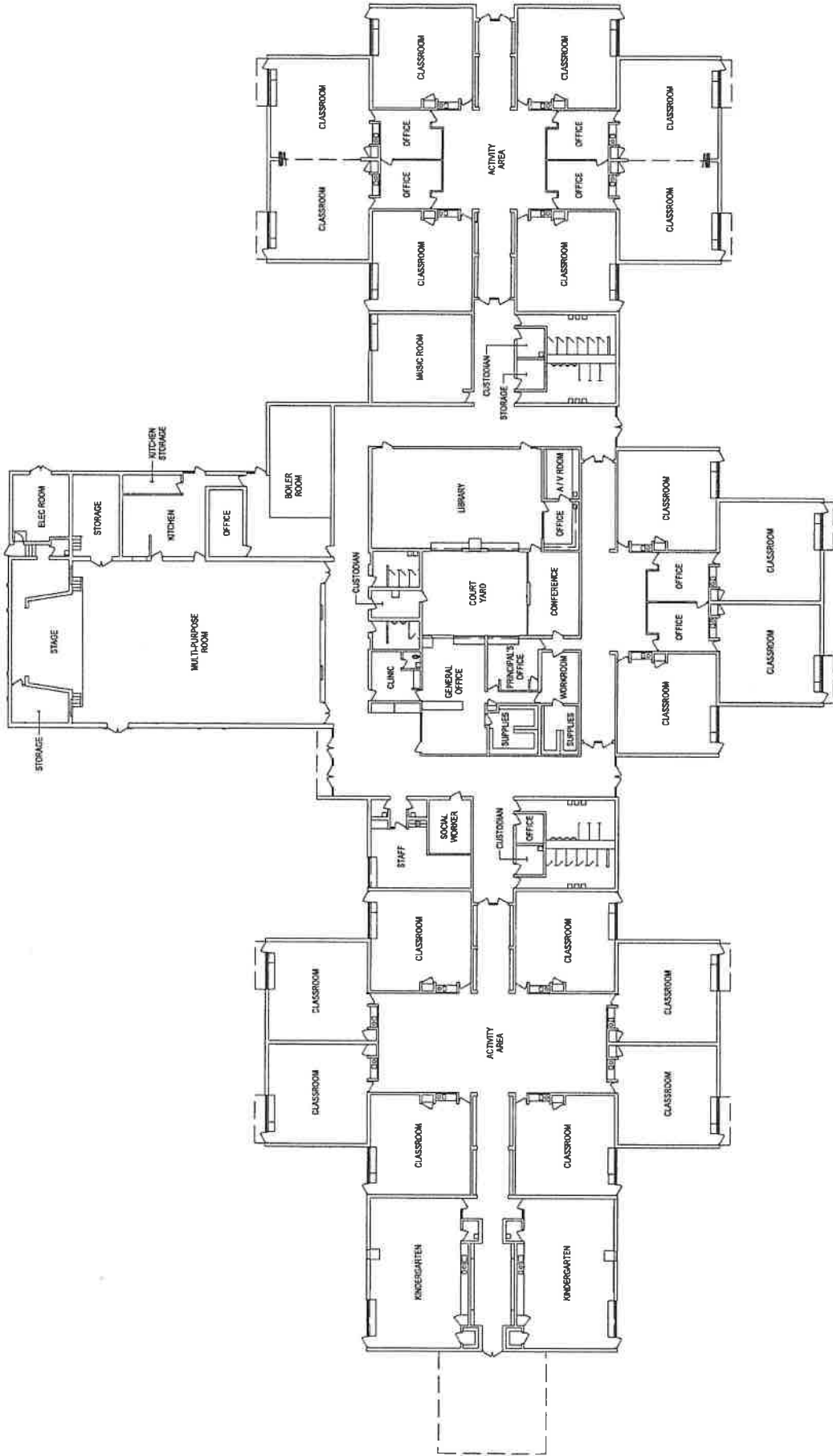
November 2, 2007

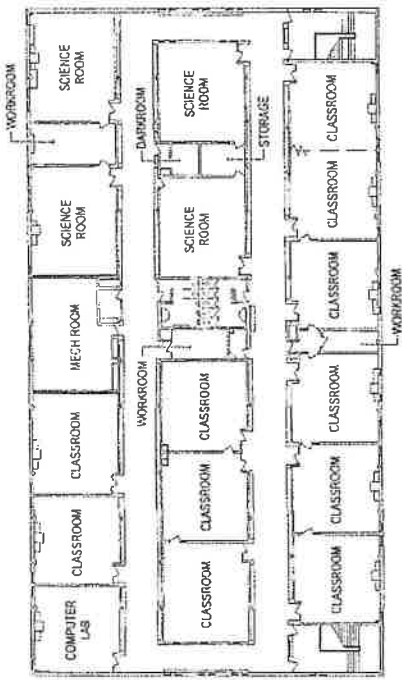




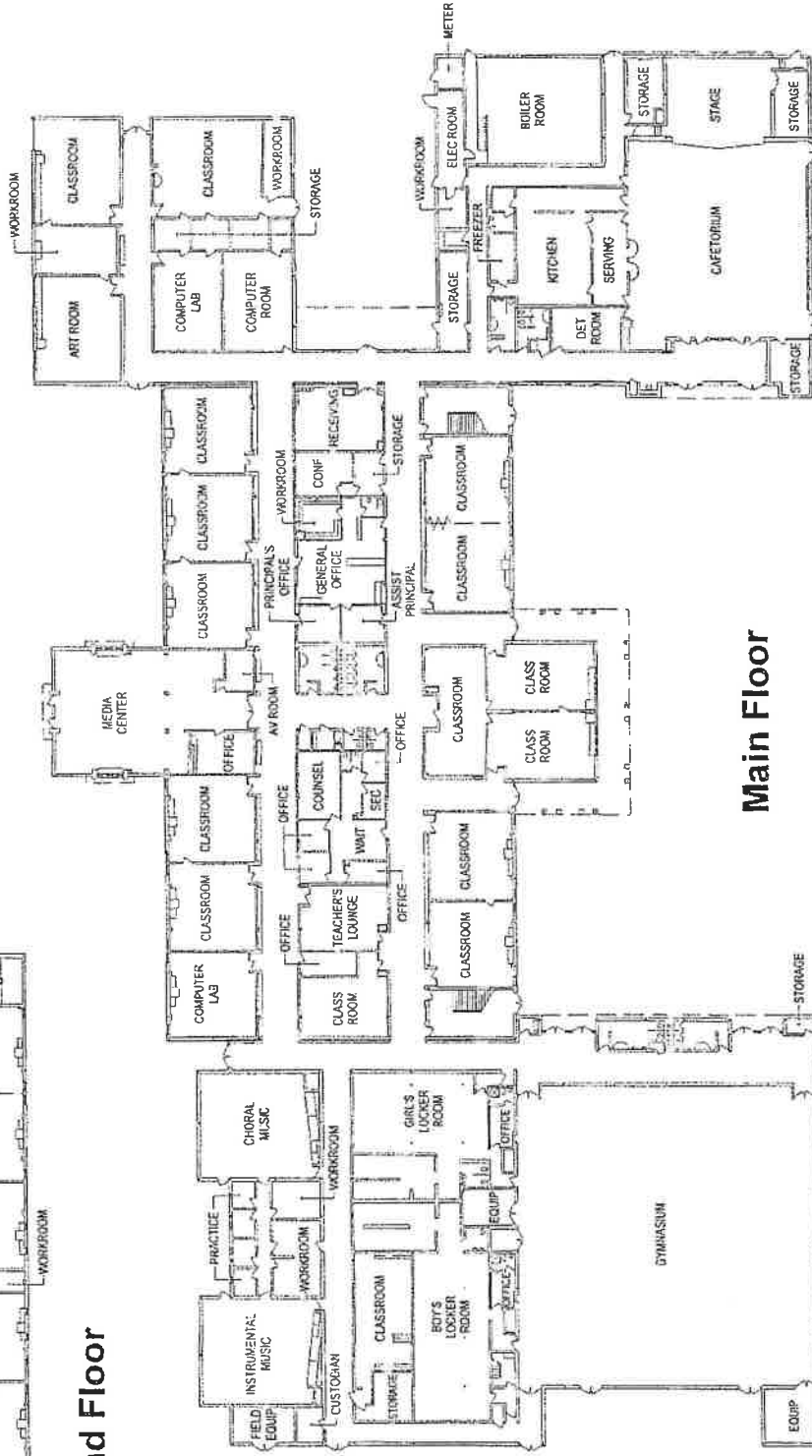
**Southfield Regional
Academic Campus (SRAC)**
48,735 sq. ft.
November 5, 2007



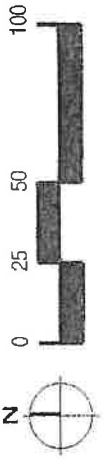




Second Floor



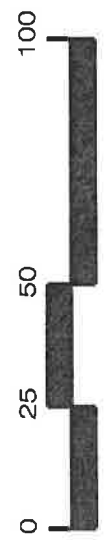
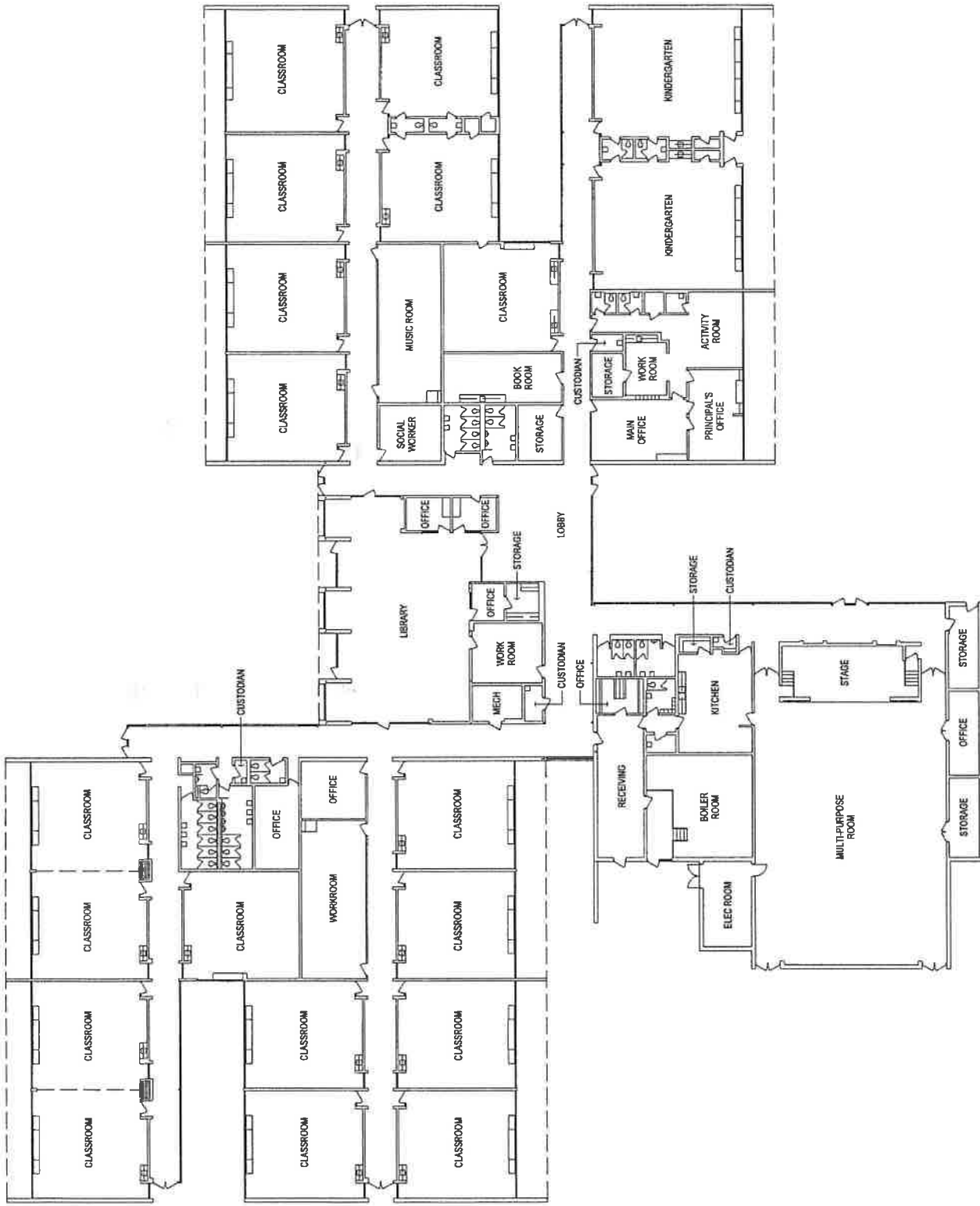
Main Floor



Thompson K-8 School

98,510 sq. ft.

November 5, 2007

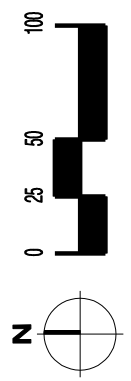
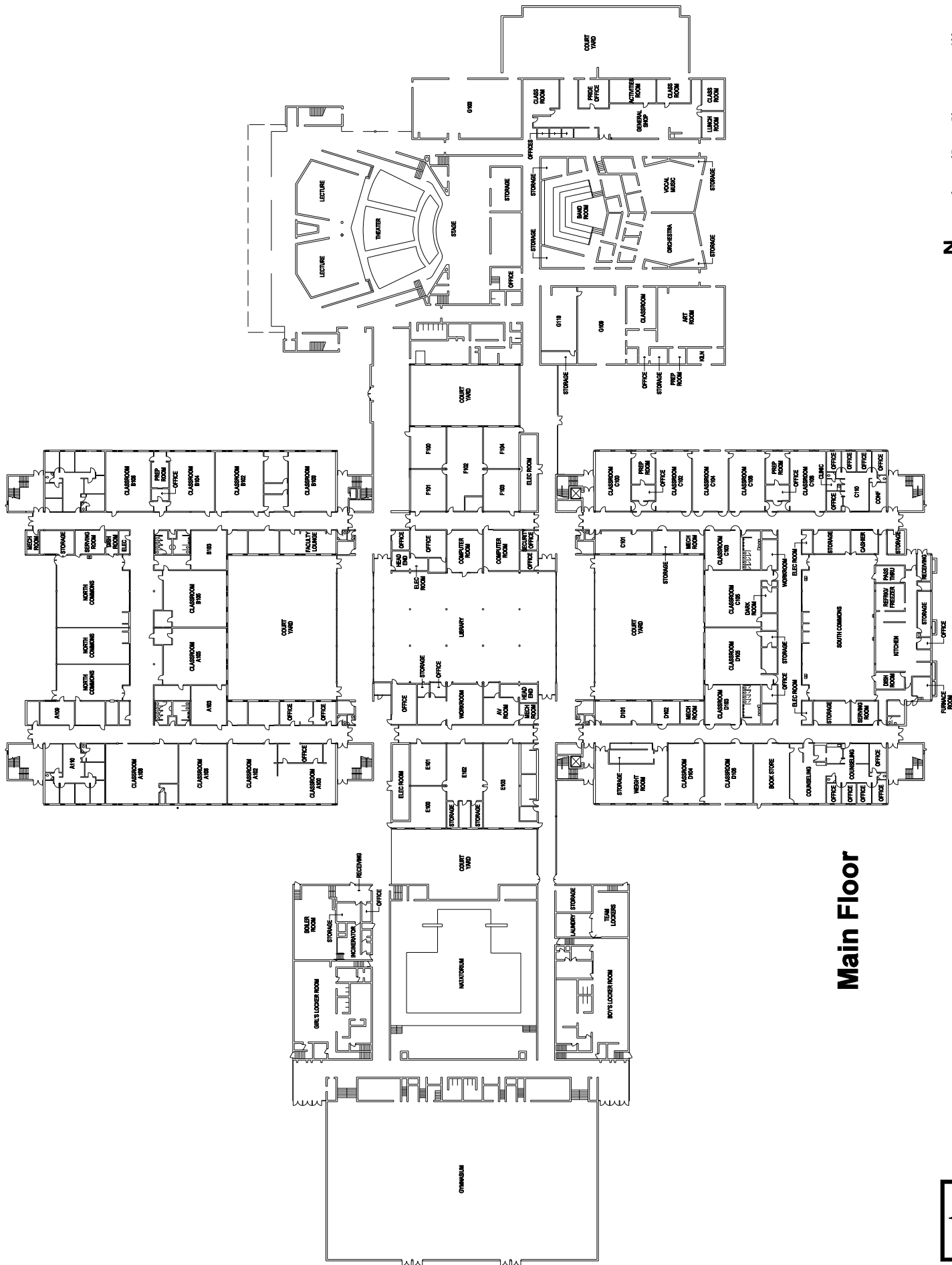


Vandenberg Elementary School

43,350 sq. ft.

November 2, 2007

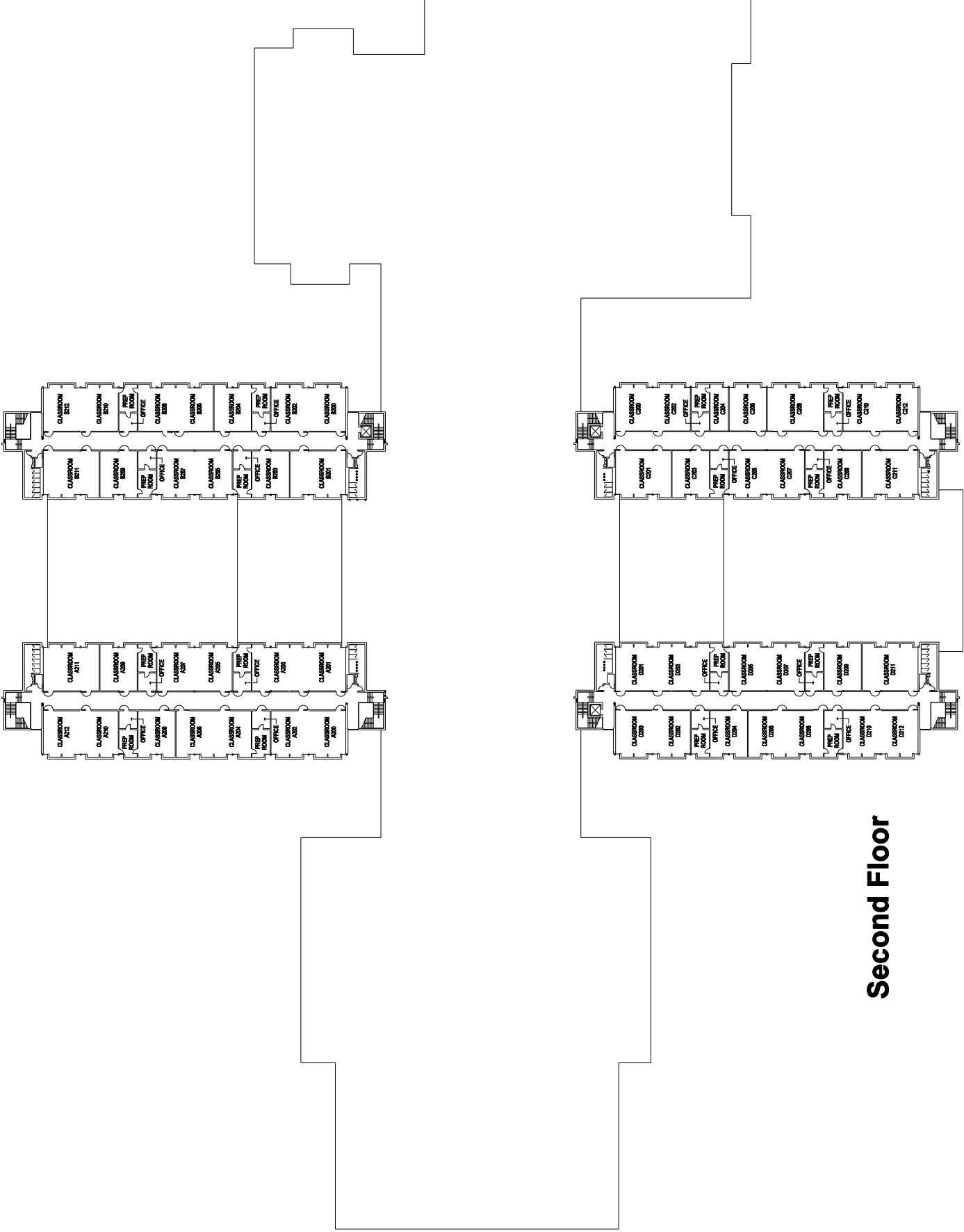




Main Floor

Southfield Lathrup High School
 256,500 sq. ft.
 November 5, 2007





Second Floor



Southfield Lathrup High School

64,560 sq. ft.

November 5, 2007

